

# XPLORER.ORG.UK

Explore the Park • Find the Markers • Complete the Challenge • Have Fun Together

## CHALLENGE 2: ANSWERS

10 inventions marked on the map



Lightbulb

1

Approximately how many years ago did Thomas Edison and fellow researchers invent the light bulb?

B: 150 years



Telephone

2

On March 10, 1876, Alexander Graham Bell made history by speaking into a telephone to his assistant Thomas Watson and proclaiming what?

A: "Mr. Watson—come here—I want to see you."



The Jet Engine

3

Technological advances have allowed jet aircraft to fly many times faster than sound, but what was the first jet engine called?

C: The turbojet engine



Tea pot

4

Invented by a Chinese potter in the mid-1300s and imported to Europe by the late-1600s what material should a teapot not be made from?

B: Chocolate

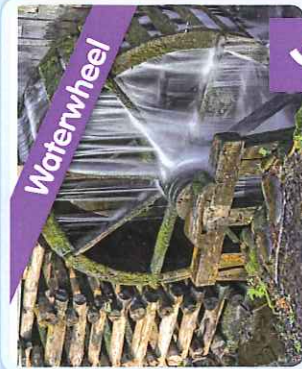


Television

5

Engineer and innovator John Logie Baird demonstrated the first working colour television system on 26 January 1926, but where was he from?

C: Scotland



Waterwheel

6

The water wheel is an ancient device that uses flowing or falling water to create what?

A: Power

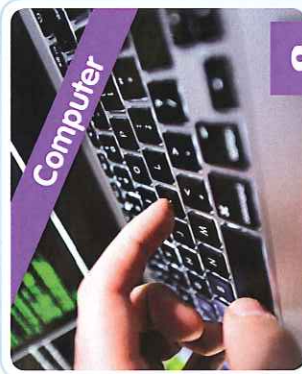


Fireworks

7

Fireworks were invented in medieval China in the 7th Century to do what?

B: Scare away evil spirits



Computer

8

Early computers made in the 1940s were around the size of a what?

C: A large room



Timepiece

9

Which scientist and scholar had the idea to use a swinging bob to regulate the motion of a time-telling device early in the 17th century?

A: Galileo



Camera

10

The first commercially available camera that was offered for sale in 1888 was called what?

B: The "Kodak"