

GREAT MANCHESTER WETLANDS NIA CITIZEN SCIENCE PROJECT DRAGONFLY SURVEY WORKSHOP BLACKLEACH CP, WALKDEN WED 28TH JULY (10AM TO 3.00PM)

The Great Manchester Wetlands Nature Improvement Area (NIA) is a unique 480 km² landscape located between the city regions of Greater Manchester and Merseyside. The NIA contains many wildlife sites of national and international importance, incorporating an array of important habitats including fen and reedbed, lowland raised bog, wet woodland, rivers, streams, ponds and open water.

These habitats support an amazing diversity of European and UK protected species, as well as UK Biodiversity Priority species all of which depend upon the mossland and wetland habitats, which the GM Wetlands Partnership is restoring and extending.

The Citizen Science Project plays a key role in identifying priority areas for species conservation, monitoring the effectiveness of the habitat works and changes in species abundance and distribution at a landscape scale.

If you have an interest in dragonflies and would like to improve, or refresh, your ID skills, as well as contribute to monitoring their current distribution and populations across the GM Wetlands NIA <https://gmwildlife.org.uk/mapapp/?project=carbonlandscape> then this workshop is definitely worth attending. At this later stage of the season, our focus will be on the hawkers but damselflies will still be on the wing.

The day will train you to carry out monthly surveys of damselflies and dragonflies on sites across the GM Wetlands NIA (previous experience of surveys is not essential). With new species expanding their range north, this is an exciting time to be involved in monitoring this beautiful and spectacular group of insects, which are an important indicator of wetland habitat quality and ecosystem health.

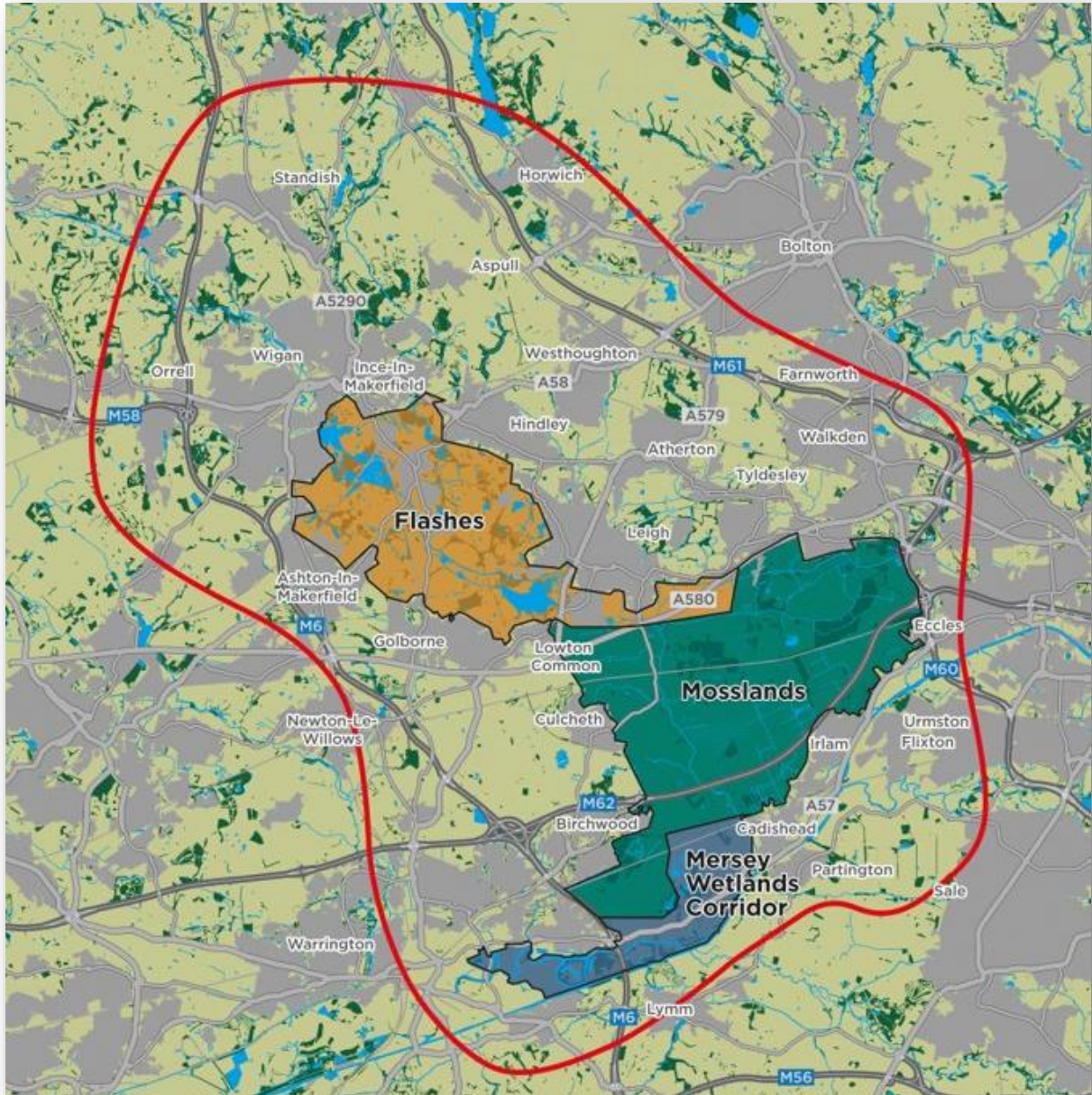
As well as mapping distribution, your records will allow us to assess the effectiveness of the habitat creation and restoration works being undertaken by the GM Wetlands Partnership at key sites and may also be used in the selection of Sites of Biological Importance (SBIs).

Booking is essential, as places are limited. To reserve your place on the workshop please email carbonlandscape@gmwildlife.org.uk or phone 0161 342 4121 if you wish to discuss taking part in the survey.

You can download the dragonfly survey manual and other documentation from https://www.gmwildlife.org.uk/carbon_landscape/

For further information on the Great Manchester Wetlands NIA please visit <https://www.lancswt.org.uk/great-manchester-wetlands>

**Great Manchester Wetlands NIA (enclosed by red line boundary)
including the Carbon Landscape Programme area
(Flashes, Mosslands and Mersey Wetlands Corridor)**



Green Recovery Challenge Fund