

## GREAT MANCHESTER WETLANDS NIA CITIZEN SCIENCE PROJECT PLANT SURVEY WORKSHOP BLACKLEACH CP, WALKDEN, SALFORD SAT 24<sup>TH</sup> JULY (10AM TO 3.00PM)

**The Great Manchester Wetlands Nature Improvement Area (NIA)** is a unique 480 km<sup>2</sup> landscape located between the city regions of Greater Manchester and Merseyside. The NIA contains many wildlife sites of national and international importance, incorporating an array of important habitats including fen and reedbed, lowland raised bog, wet woodland, rivers, streams, ponds and open water.

These habitats support an amazing diversity of European and UK protected species, as well as UK Biodiversity Priority species all of which depend upon the mossland and wetland habitats, which the GM Wetlands Partnership is restoring and extending.

The Citizen Science Project plays a key role in identifying priority areas for species conservation, monitoring the effectiveness of the habitat works and changes in species abundance and distribution at a landscape scale. Although some taxonomic groups, such as birds, have been the subject of structured surveys for many years, good quality survey data is less widely available for plants. The Citizen Science Project Plant Survey aims to fill this gap by recruiting and training voluntary recorders to carry out surveys of the key habitats that make up this area of high nature conservation value. The abundance of some plant species has changed significantly over the last 30 years with some declining due to changes in land use and habitat loss; whereas, other species have increased as environmental conditions have changed in their favour. To protect existing plant populations and to improve habitat suitability for declining species, it is important to understand which species are present where and which habitats they occur in.

The workshop consists of an online session and practical field survey training which will prepare you to take on your own survey of a one kilometre square within the GM Wetlands NIA.

The survey is designed to be accessible to plant enthusiasts with a range of experience and whilst some prior plant identification knowledge is essential, lack of experience in areas such as grasses or ferns will not prevent you from making a valuable contribution. Previous survey experience is not essential, if you are keen to put your ID skills and interest in plants to practical use.

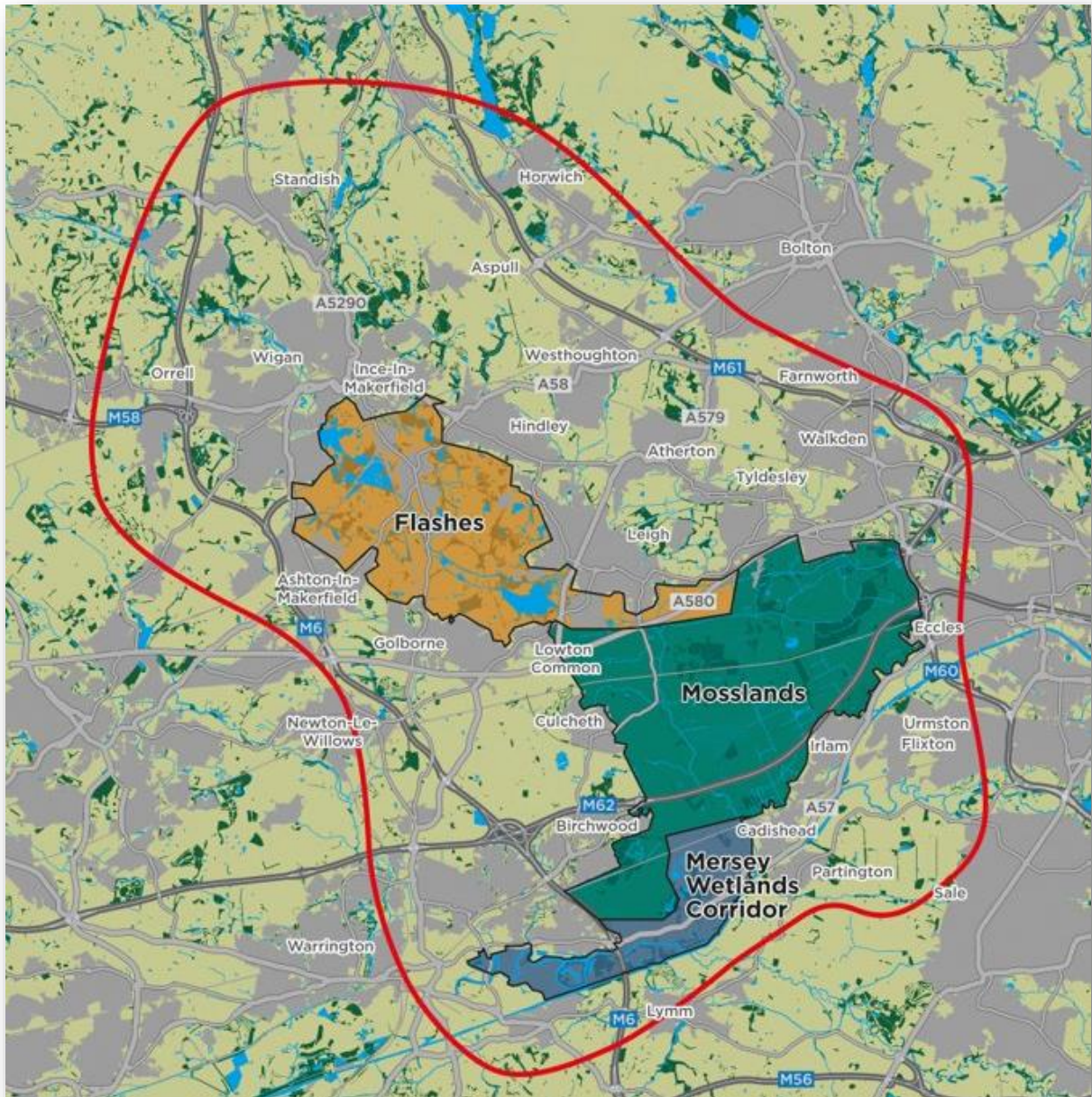
As well as, learning how to carry out the survey you will be able to sign up for a 1km survey square.

Booking is essential, as places are limited. To reserve your place on the workshop please email [carbonlandscape@gmwildlife.org.uk](mailto:carbonlandscape@gmwildlife.org.uk) or phone 0161 342 4121 if you wish to discuss taking part in the survey.

You can download the plant survey manual and other documentation from [https://www.gmwildlife.org.uk/carbon\\_landscape/](https://www.gmwildlife.org.uk/carbon_landscape/)

For further information on the Great Manchester Wetlands NIA please visit <https://www.lancswt.org.uk/great-manchester-wetlands>

**Great Manchester Wetlands NIA (enclosed by red line boundary) including the Carbon Landscape Programme area (Flashes, Mosslands and Mersey Wetlands Corridor)**



**Green Recovery Challenge Fund**