

# Coastal Explorers



The Wildlife Trust for  
**Lancashire  
Manchester &  
North Merseyside**





The Wildlife Trust for  
**Lancashire**  
**Manchester &**  
**North Merseyside**

# Coastal Explorers Network



Join our Coastal Explorers Network on Facebook by scanning this QR code!



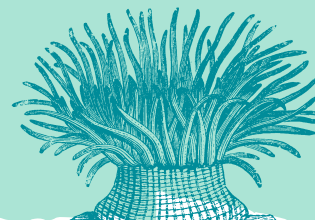
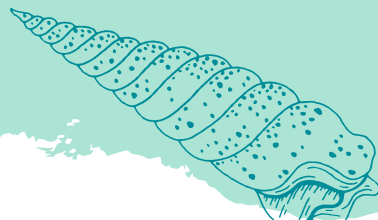
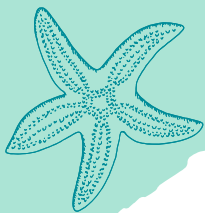
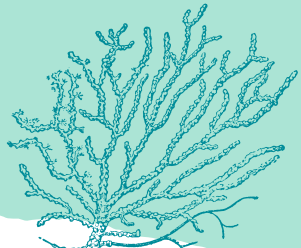
Use the group to send us your finds or ask us to help out with species identification! You can even meet other Explorers!



Connect with us on:



@FyldeSandDunes  
@LivingSeasNW





# Coastal Explorers Network

## Explorer Checklist

- Tide Times checked
- Responsible adult
- My Coastal Explorers Spottersheet
- Wellies & Waterproofs (weather dependent)
- Suitable clothing
- Clean/sterilised net
- Clean/sterilised clear tray or bucket,
- Phone (to take photos)
- Pen/ pencil

1.

Be patient, you can often spook wildlife, from casting shadows or being too loud. Wait a little and you could be surprised with what you might find.

2.

Always handle the live wildlife with care and respect (remember this is their home!). Be extra careful if you are using a net.

3.

Don't keep live creatures out of their habitat for too long. Always put wildlife back where you found it.

4.

Always respect your fellow explorers and encourage them to follow the Explorers Code.





The Wildlife Trust for  
**Lancashire  
Manchester &  
North Merseyside**

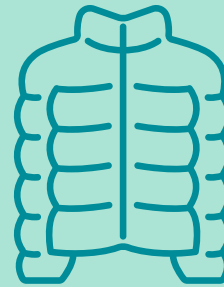
# Coastal Explorers Health & Safety



Always check the tide times before your adventure. The tide comes in and out twice each day! Plan your trip a few hours after high tide.



Don't forget your wellies  
(or sensible footwear)  
- It can get slippery



Wear suitable clothing for the  
weather and location



Don't climb on  
the rocks



If you encounter any problems,  
contact the local coastguard



Don't touch any animals or  
plants that could sting



Always check the weather  
forecast before your visit and only  
go ahead if it is safe to do so



Wash and sterilise your hands  
before and after handling any  
creatures



The Wildlife Trust for  
**Lancashire  
Manchester &  
North Merseyside**



# Coastal Explorers Minibeast Hunting

## Don't forget:

- Wear suitable clothing and footwear for exploring
- Bring some binoculars if you have some to see the butterflies up close
- Butterflies like warm sunny weather so don't forget your sun cream!
- Searching for butterflies is best between 10am and 5pm in warm, bright weather
- Butterflies will not be out in the rain or strong winds
- Be patient



Grasshopper



Grass Bug



Ladybird



Sawfly



Sawfly  
Larvae



Shield Bug



Send us  
your finds!



The Wildlife Trust for  
**Lancashire  
Manchester &  
North Merseyside**



# Coastal Explorers Minibeast Hunting



Common  
Blue



Meadow  
Brown



Small White  
(Wingspan: 4-6cm)



Gatekeeper



Burnet  
Moth



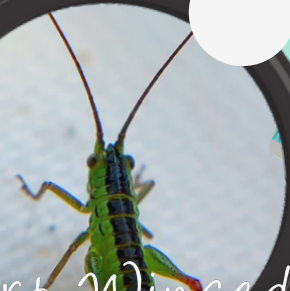
Latticed  
Heath Moth



Click Beetle



Weevil



Short-Winged  
Conehead



Running  
Grass Spider



Send us  
your finds!