



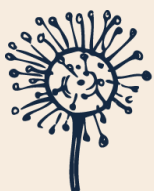
The Wildlife Trust for
**Lancashire
Manchester &
North Merseyside**



**Forest of
Bowland
National
Landscape**

Strategic Plan

Credit Kate Ball



**Lancashire
Peat Partnership**

Version 1.0
Approved 17 Dec 2025

Version	Author	Date	Approved By	Date
1	Alex Hubberstey	9/10/2025	Tom Burditt	17/12/2025
			Tony Lund	12/12/2025

Vision Statement

Credit A.J Critch Wildlife

The Lancashire Peat Partnership works to see the peatland habitats of Lancashire, Greater Manchester and North Merseyside restored to ecological and functional health, managed in a sustainable way, and increasing the overall resilience of these habitats. This is to help mitigate and adapt to the effects of climate change and the biodiversity crisis, and providing many ecosystem services; improving biodiversity, reducing flood risk for local communities, wildfire and drought risk, improving water quality, sequestering carbon, and improving quality of our local wild spaces.



Lancashire Peat Partnership

Overview

The **Lancashire Peat Partnership (LPP)** was established in 2009 to help facilitate the **restoration** and **sustainable management** of peatland soils across the county of Lancashire. The LPP's working area covers a **nuanced geography** which includes the majority of **Lancashire, Greater Manchester and North Merseyside**, with the **Yorkshire side** of the **Forest of Bowland**, and excludes the Peak District, covered by Moors for the Future Partnership, and the Yorkshire Dales National Park, covered by Yorkshire Peat Partnership.

The LPP is **revenue funded** in partnership with the **Esmee Fairbairn Foundation, United Utilities** and **Lancashire County Council**.

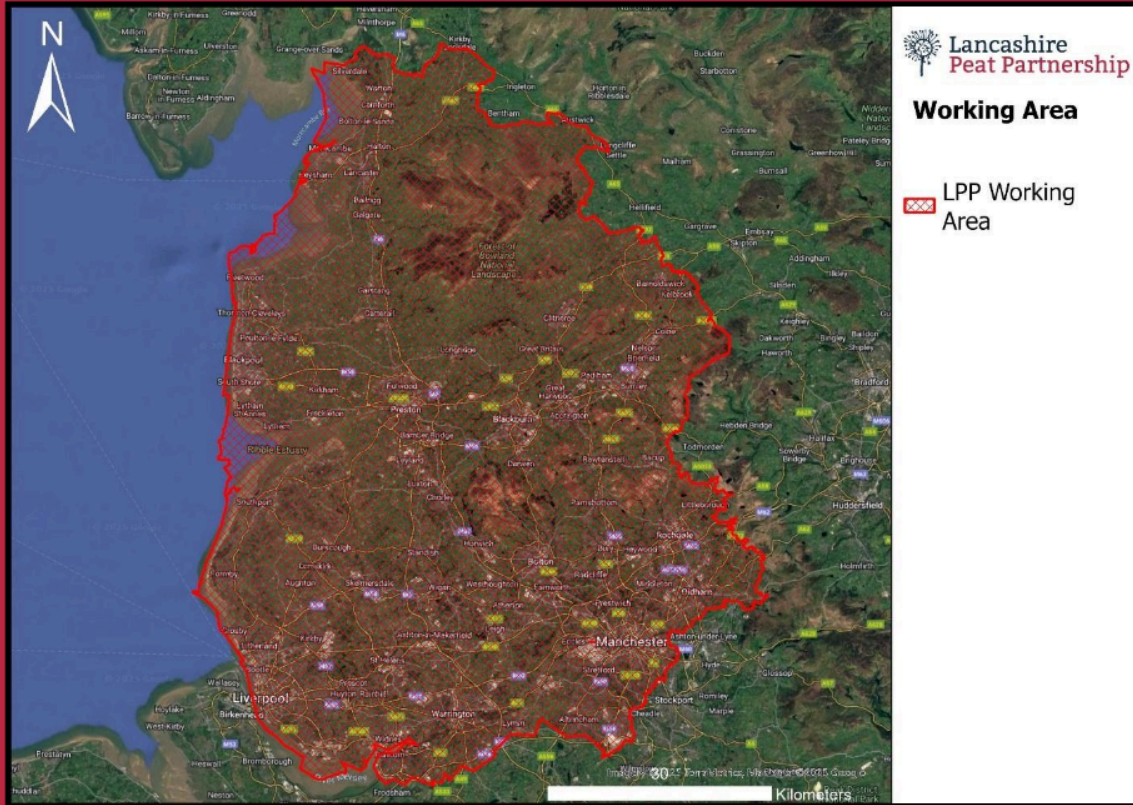
The LPP partner organisations include:
Lancashire Wildlife Trust (host organisation)
Environment Agency
Forest of Bowland National Landscape
Lancashire County Council
National Trust
Natural England
Regional Rivers Trusts and their host organisations
United Utilities
Woodland Trust



Credit A.J Critch Wildlife

As of March 2024, the LPP have brought 424ha of land under restoration across both the West Pennine Moors and Forest of Bowland.

The Lancashire Peat Partnership Area



There are approximately **176,000ha** of peat soils in the LPP working area; **140,000ha** of this is **upland peat**, with the remaining **36,000 ha** being **lowland peat**. Notable areas include the **Forest of Bowland, West Pennine Moors, Rossendale Forest** and the lowlands of **West Lancashire**. Landowners of peat soils include **United Utilities, Grosvenor Estates, National Trust, Lancashire Wildlife Trust** and other private landowners. A significant component of current management of peat soils is for agriculture. In the hills, this is most often sheep grazing, whereas the lower lying land is for a combination of grazing and arable crops.

Upland peat soils have experienced **significant historic degradation** caused by a combination of factors, but notably **drainage for agriculture and over-grazing** by sheep and deer. Lowland peat soils have experienced a **98% loss** in the LPP region due to drainage for agriculture, over grazing and developments. The **majority** of peatlands covered by the LPP are considered to be in a **degraded state**.

The Great North Bog Overview



Credit Kirsty Tyler

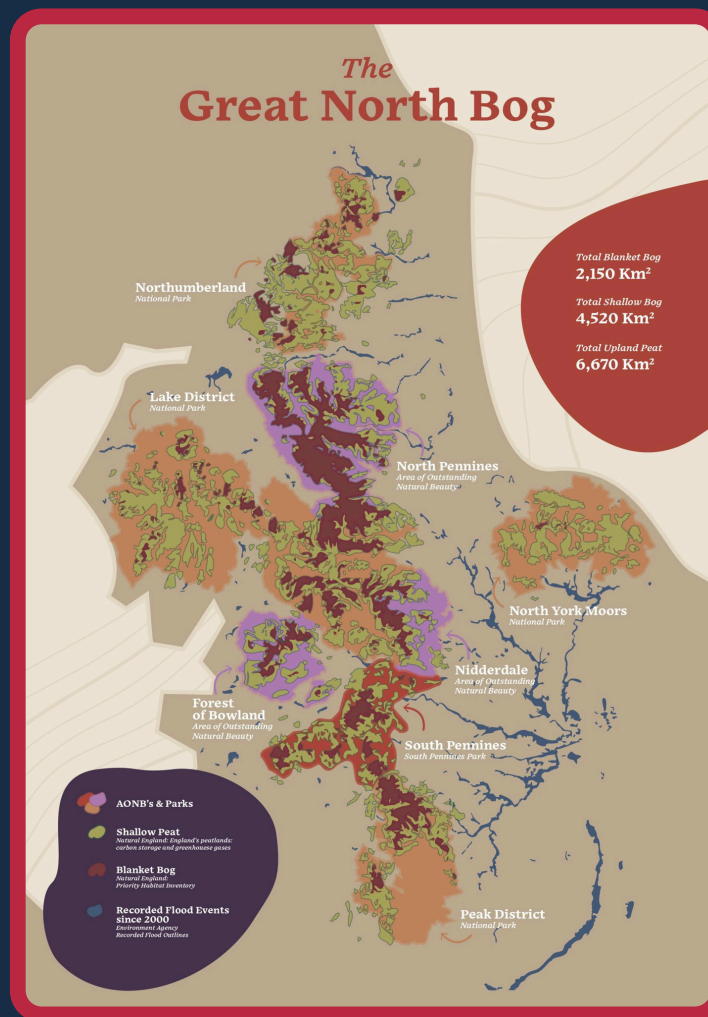
The **Great North Bog** (GNB) is an initiative of peat partnerships, officially launched in 2022. Made up of six partners, the GNB's collective action seeks to **restore** the **upland peat soils** in the northern counties of England, where most of the peat resource can be found.

- The GNB partners include:
- Cumbria Peat Partnership
 - Lancashire Peat Partnership
 - Moors for the Future Partnership
 - North Pennines National Landscape
 - Northumberland Peat Partnership
 - Yorkshire Peat Partnership



Credit Kirsty Tyler

A recent Great North Bog visit to LPP included a trip to The Greenhouse Project to see the sphagnum being grown



Collectively the GNB can achieve more than the individual delivery partnerships. A collective voice has more sway in advocating for large-scale change in the world of peatland restoration and policy.

Themes	Objectives	Responsibility	Outputs by 2030	Outcomes by 2030	Resources
Peatland restoration & conservation	Undertake surveys and develop restoration plans for the peatlands of the LPP area.	Lancashire Wildlife Trust. Forest of Bowland National Landscape. United Utilities	<ul style="list-style-type: none"> • A resource of “shovel-ready” site restoration plans ready for a suitable funding stream to become available. • A master-map is developed showing areas which have plans created and those which are still waiting. • The additional benefits that can be delivered through peatlands restoration within the water environment are mapped and quantified. 	<ul style="list-style-type: none"> • The LPP is prepared and ready to react to new funding streams. • Many areas of the region have been surveyed and works determined. 	<p>Required – additional staff to help implement.</p> <p>Funding for surveys.</p>
	Bring a further 4,000ha of land into restoration or sustainable management.	Lancashire Wildlife Trust. Forest of Bowland National Landscape. United Utilities. Natural England. Rivers Trusts.	<ul style="list-style-type: none"> • 4,000ha have had restoration works undertaken on them. • 25 landowners/ land managers engaged with. • 2 landscape scale Typha (wetter farming) trials are established. 	<ul style="list-style-type: none"> • Water tables have been raised on peatlands across the region. • Wildfire and drought risk across the region is reduced. • The amount of carbon emitted by degraded peatlands is reduced. • Biodiversity begins to increase across the sites. 	<p>Required – additional staff to help implement.</p> <p>Capital works funding.</p>



Themes	Objectives	Responsibility	Outputs by 2030	Outcomes by 2030	Resources
Peatland restoration & conservation (cont)	Develop a pipeline of sites to explore restoration/management potential with landowners/land managers.	Lancashire Wildlife Trust. Forest of Bowland National Landscape. United Utilities. Natural England. Environment Agency. Rivers Trusts. Lancashire County Council.	<ul style="list-style-type: none"> A site priority matrix is created incorporating both ecological and pragmatic factors. A map is created based on the priority matrix highlighting areas for the pipeline. 	<ul style="list-style-type: none"> The LPP is prepared and ready to react to new funding streams. The LPP knows which peatlands are of highest priority for restoration. Relationships established with landowners/land managers. 	Secured.
	Reduce the occurrence of damaging wildfires by increasing the resilience of key sites across the region.	All partners.	<ul style="list-style-type: none"> Restoration/management sites are holding more water. <i>Molinia caerulea</i> dominance begins to reduce on restoration sites. 	<ul style="list-style-type: none"> Wildfire risk is reduced across restoration sites in the region. The peatlands are more resilient to wildfires and the peat mass protected from damaging fires. 	Required – additional staff to help implement.

Themes	Objectives	Responsibility	Outputs by 2030	Outcomes by 2030	Resources
Generating awareness and support	Support the GNB with advocating for peatland policy and best practice in local and national government.	Lancashire Wildlife Trust. Forst of Bowland National Landscape.	<ul style="list-style-type: none"> The LPP team contribute to GNB activities in relation to policy and best practice. The LPP team's voice is heard in the GNB collective. 	<ul style="list-style-type: none"> National policy has changed based on LPP's input into the GNB processes. 	Secured.
	Support trialling a North-West wide wildfire prevention system.	All partners.	<ul style="list-style-type: none"> Work with local landowners/managers to establish suitable areas to trial a new system. Incorporate trial into local Landscape Recovery Schemes such as the West Pennines More Nature Partnership and Brock and Calder. Engagement events with local communities about the risks of wildfires to our peatlands. 	<ul style="list-style-type: none"> Increased public awareness of the risks of wildfires. Reduced frequency of wildfires across the region. Trial is deemed a success and rolled out across the region with landowner/manager and community support. 	Required – a platform/project to undertake this at a landscape scale/successful implementation of a LRS project.

Themes	Objectives	Responsibility	Outputs by 2030	Outcomes by 2030	Resources
Generating awareness and support (cont)	Develop and deliver an LPP engagement and comms strategy.	Lancashire Wildlife Trust. Forest of Bowland National Landscape. Lancashire County Council.	<ul style="list-style-type: none"> LPP Engagement and Comms plan covering the 2025-2030 period is created. Engagement and comms work for the period links back to the plan. 	<ul style="list-style-type: none"> The LPP has clear targets for comms and engagement which it can work towards. 	Secured.

Building capacity and collaborative working	Work with other delivery partnerships in the GNB to share best practice and experience.	Lancashire Wildlife Trust. Forest of Bowland National Landscape.	<ul style="list-style-type: none"> LPP team members attend GNB hosted meetings such as the operations group, engagement group, and the peat practitioners group. 	<ul style="list-style-type: none"> Knowledge sharing between the partnerships is increased. 	Secured.
	Host regular LPP meetings throughout the year to share skills and knowledge with partners.	Lancashire Wildlife Trust.	<ul style="list-style-type: none"> Host at least 3 regular meetings per financial year inviting all partners. Include agenda items which promote sharing of ideas between partners. Organise at least 1 site visit for the LPP partners per financial year. 	<ul style="list-style-type: none"> Knowledge sharing within the partnership is increased. Partners gain first-hand knowledge of restoration sites. 	Secured.



Themes	Objectives	Responsibility	Outputs by 2030	Outcomes by 2030	Resources
Building capacity and collaborative working (cont)	Grow the size of the LPP staff teams in line with the growing amount of work in the region.	Lancashire Wildlife Trust. Forest of Bowland National Landscape.	<ul style="list-style-type: none"> Work with partner organisations to secure revenue funding to cover the cost of the current team till 2030. Identify any gaps in the team and develop job roles to support. Work with partner organisations to secure revenue funding for new members of staff. 	<ul style="list-style-type: none"> LPP team size is increased. Amount of work delivered by the LPP is increased. Revenue funding for the LPP is increased and current team's jobs secured till 2030 at least. 	Required – revenue funding.

Research, monitoring and metrics	Identify peat knowledge gaps across the region and commission key research to begin filling these.	All partners.	<ul style="list-style-type: none"> Have a dedicated meeting where the LPP partners can discuss the different knowledge gaps they are currently aware of and compile a “wish list” of research questions. Work with local academic institutions to form the questions into a list of projects. Work with higher education students to begin filling these gaps. 	<ul style="list-style-type: none"> Dedicated meeting is held and knowledge gaps are clear to partners. Relationships with academic institutions are created or further developed. Knowledge gaps begin to get filled. 	Required – academic institutions regularly attending LPP meetings/specific meeting.
---	--	---------------	---	--	---



Themes	Objectives	Responsibility	Outputs by 2030	Outcomes by 2030	Resources
Research, monitoring and metrics (cont)	Trial new techniques in restoration, management and monitoring and disseminate results among partners and other peat partnerships.	Lancashire Wildlife Trust. Forest of Bowland National Landscape. Natural England.	<ul style="list-style-type: none"> Where appropriate, trial new-to-the-LPP restoration methods on suitable sites across the region. Ensure there is sufficient funding to cover the cost of writing up a report on the findings of the technique. Disseminate results to partners in the LPP and the GNB. 	<ul style="list-style-type: none"> New techniques are trialed and their success/failure assessed. Successful new techniques are incorporated into future plans. Partners are aware of trials and their result. 	Required – Natural England approval of new techniques (SSSI sites only).
	Ensure the monitoring of restoration works beyond the compliance monitoring of funded projects.	Lancashire Wildlife Trust. Forest of Bowland National Landscape.	<ul style="list-style-type: none"> Work with partners to secure long-term revenue funding to ensure all previous restoration sites have some level of continued monitoring in line with standardised LPP monitoring methods. 	<ul style="list-style-type: none"> Surveys of old restoration sites prove the success of activities. Long-term funding is secured to allow for surveys to occur. 	Required – additional staff to help implement. Monitoring resource.

Themes	Objectives	Responsibility	Outputs by 2030	Outcomes by 2030	Resources
Research, monitoring and metrics (cont)	Feed into the development of green finance standards.	All partners.	<ul style="list-style-type: none"> Work with GNB partners to feed into policy surrounding the provision of green finance in the peatland sector. Explore the potential and possibly sign up a site to either Wilder Carbon or Peatland Code. 	<ul style="list-style-type: none"> LPP's voice is heard and helps shape the green finance discussions. 	Secured.

Securing and allocating resources	Support the GNB with the development of private sector investment.	All partners.	<ul style="list-style-type: none"> Feed into any meetings/documents that the GNB host/share regarding the development of private sector investment. 	<ul style="list-style-type: none"> LPP's voice is heard and helps shape the green finance discussions. 	Secured.
	Support the development of further wetter farming trials/funding.	Lancashire Wildlife Trust. Environment Agency. DEFRA.	<ul style="list-style-type: none"> Successful alternative land management techniques put in place to protect agri-peat soils. Work with partners to secure long-term funding for the development of wetter farming projects. 	<ul style="list-style-type: none"> Water tables have been raised on agri-peat soils across the region. The amount of carbon emitted by agri-peat is reduced. Biodiversity begins to increase across the sites. 	Required – additional staff to help implement.



Themes	Objectives	Responsibility	Outputs by 2030	Outcomes by 2030	Resources
Securing and allocating resources (cont)	Bid collaboratively for resources to fund peatland restoration.	All partners.	<ul style="list-style-type: none"> When a new fund becomes available, work with partners to submit a bid under the LPP banner. 	<ul style="list-style-type: none"> Joint projects across the region increase. 	Secured.
	Invest in all LPP staff including, training and equipment purchase.	Lancashire Wildlife Trust. Forest of Bowland National Landscape.	<ul style="list-style-type: none"> Work with partners to secure long-term funding for training and development, and equipment for LPP staff. 	<ul style="list-style-type: none"> LPP staff are upskilled. LPP possesses all equipment needed for day-to-day working. 	Required – revenue funding.

Prioritisation Principles

As part of the strategy process, LPP partners have collaborated on the development of a site prioritisation matrix. This takes into account a **wide array** of factors that need to be considered from the **ecological** to the **pragmatic**. The aim of this matrix is to prioritise sites based on ecological benefits, whilst also being able to take into account the **viability** of them being restored.

Scoring Explanation					
All scores are based on a 1-5 scale.					
Explanation					
Factor	1	2	3	4	5
Fire risk	Minimal-no risk	Minor risk	Average risk	Moderate risk	Highest risk
Climate resilience	No risk from climate change	Some risk from climate change	Average risk from climate change	Moderate risk from climate change	High risk from climate change
Peat depth	Average <30cm	Average 30cm-50cm	Average 50cm-1m	Average 1m-1.5m	Average >1.5m
Vegetation type	Near-natural vegetation community	Modified, near-natural vegetation community	Modified vegetation community	Degraded vegetation community	Highly degraded vegetation community
Erosion resilience	High resilience	Moderate resilience	Average resilience	Limited resilience	No resilience
Degradation level	No degradation	Some minimal degradation	Average degradation	Moderate-high degradation	High degradation
		Limited		Limited	

Regarding the ecological matrix, the **highest** weighting was given to the core ecological factors including **fire risk, climate resilience, habitat condition, water, and connectivity**. Many of these factors include sub-factors which break it down even further, including categories such as **peat depth, vegetation type and degradation level**.



Credit Laura Cronin



Credit Nathan Thomas



Credit Alan Wright



Credit A.J. Critch Wildlife



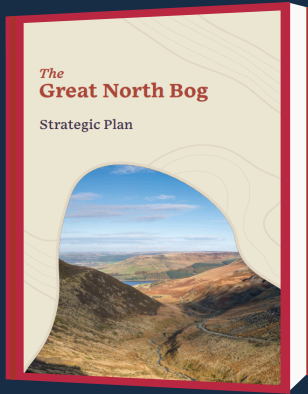
Credit A.J. Critch Wildlife

Next are the ecosystem service factors which consider **biodiversity** and **carbon**. Finally, social factors looking at **pressure** and **anti-social behaviour** and **cultural heritage**. These social factors were deemed the least important in terms of weighting, but still something that needs considering with projects.

The viability part of the matrix is used to determine how **achievable** a project is. If the site is under pressure from a development such as a **windfarm**, has **prohibitive geology**, or will be lost under all **climate change scenarios**, then it is deemed unviable. Other factors which require consideration are whether it is **fundable**, has **landowner and land manager support**, is it **achievable** and **good value for money**.

All potential sites in the pipeline, or general areas of peatland can be run through this model, then the resulting outputs will show which have the highest score in terms of both ecology and viability.

Related strategies



Great North Bog Strategy

The LPP Strategy has been created in line with the Great North Bog Strategy document: [Great North Bog Strategic Plan](#)

The themes of the LPP objectives are aligned with the GNB, and the targets achieved through this strategy contribute directly to the GNB objectives.

Local strategies

The work of the LPP partners aligns directly to a number of local and national strategies:

- Forest of Bowland National Landscape Management Plan
- 5-year Environment Plan for Greater Manchester (2025-2030)
- Environmental Improvement Plan
- Greater Manchester Local Nature Recovery Strategy
- Greater Manchester Strategy 2021-2031
- Lancashire Local Flood Risk Strategy 2021-2027
- Lancashire Local Nature Recovery Strategy
- Landscape Strategy for Lancashire
- Protected Site Strategies





The Wildlife Trust for
**Lancashire
Manchester &
North Merseyside**



National
Trust



Environment
Agency



WOODLAND
TRUST



Ribble Rivers
TRUST



WYRE RIVERS TRUST
"from Bowland to Bay"

Credit Kate Ball



Lancashire
Peat Partnership

Version 1.0
Approved 17 Dec 2025