



The Wildlife Trust for
**Lancashire
Manchester &
North Merseyside**

Recruitment Pack



About us

We're one of 47 Wildlife Trusts spread across the UK, the Isle of Man and Alderney.

The Wildlife Trust for Lancashire, Manchester and North Merseyside (LWT) was founded in 1962 by people who knew they needed to take action for nature. Since then we have grown to be the largest nature conservation body in the area.

We are uniquely positioned to lead change in our region, working at a grass roots, local level, whilst also being part of a strong cohesive national movement. We work to protect wild spaces, and re-introduce key species and habitats, protecting the biodiversity of our area so that nature can recover.

At LWT we believe that:

- Wildlife has intrinsic value, bringing colour, beauty and wonder to all our lives.
- The natural environment is under immense and growing threat, where we live and across the world.
- We are part of the natural world, and wildlife is relevant to every part of our lives; everything we do has an impact on it, and the natural environment affects our health, our wealth and our state of mind.
- Everyone can make a positive contribution to wildlife and can benefit from it.



Our Mission

- Enable wildlife's recovery in our area by working in partnership with others to conserve, restore, create and connect habitats and to increase species abundance;
- Connect people with nature and help them to take action for wildlife, wherever they are.

Our Vision

- Nature is recovering on a grand scale across Lancashire, Manchester and North Merseyside, and in our sea, and that everyone is able to enjoy our increasingly abundant wildlife.

Our Work

Our core conservation work includes land management, advocacy for the natural world with key decision-makers, species re-introduction, protecting threatened species and collecting essential scientific data. We do this on land and at sea to secure a brighter future for both wildlife and wild places across our region.

We work all over our area with schools, colleges and community groups, running inspiring sessions covering everything from Forest School and orienteering, to Wild Family and Nature Tots sessions.

We believe that wildlife and nature have the power to instill confidence, heal the mind and help people meet their potential, which is why we champion a number of ecotherapy-based projects for both children and adults and the positive impacts to date have been phenomenal.

Find out more: www.lancswt.org.uk/our-work

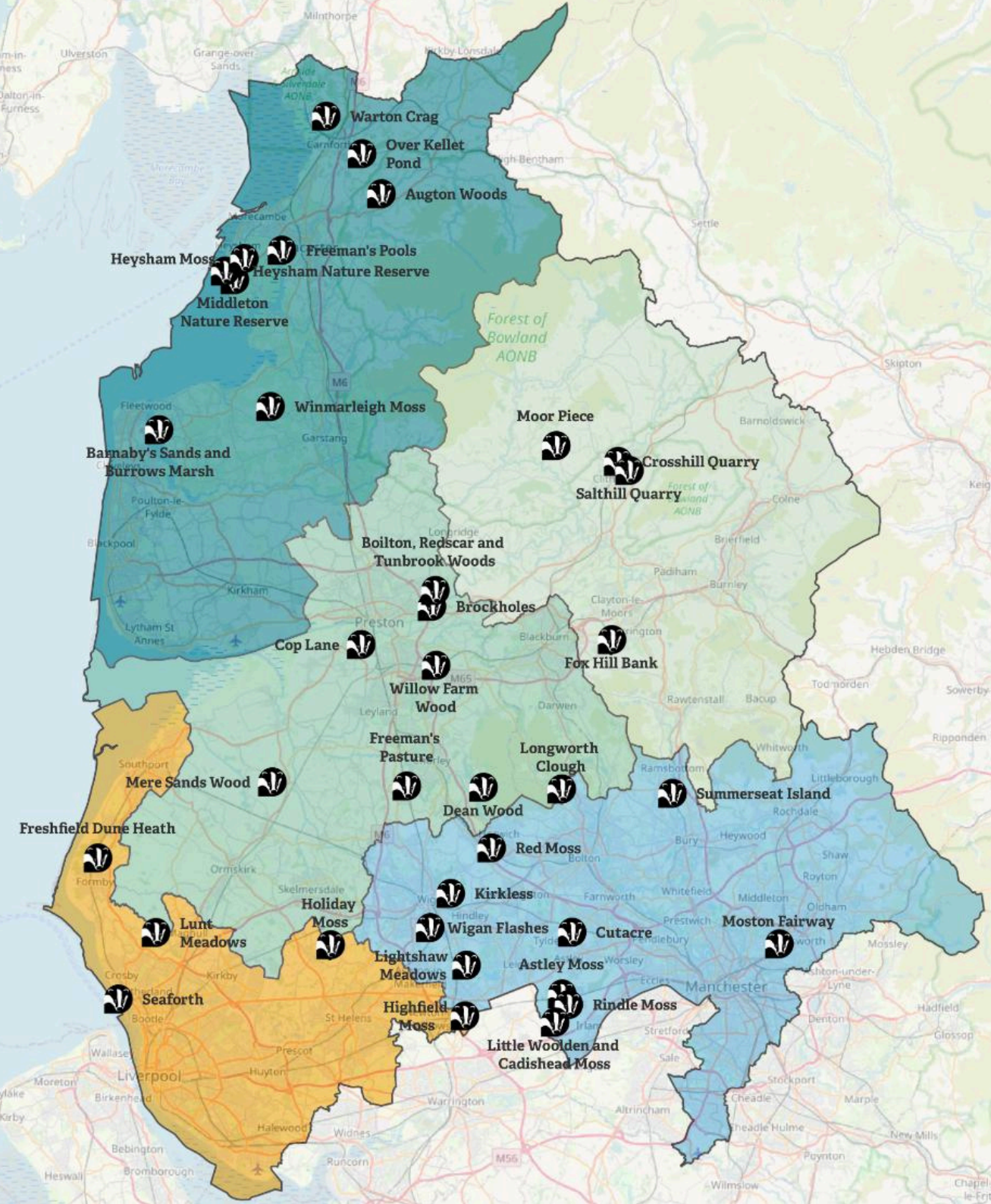
Our Nature Reserves

We have saved many special places, acquiring and managing many of them as nature reserves.

We look after 50 sites (including 42 of our own nature reserves), and a total of around 1,300 hectares of habitat, creating a network where people and wildlife can thrive, on your doorstep.

We believe that limited mobility shouldn't mean missing out on wildlife. Many of our reserves have accessible paths and boardwalks, disabled facilities and accessible bird hides, so people can fully immerse themselves in the great outdoors and discover the wonderful wildlife that lives on our doorstep.

We also have 6 offices based across Greater Manchester, North Merseyside, West Lancashire, East Lancashire and North Lancashire. Our Head Office is based on the outskirts of Preston.



Strategic Goals by 2030

- Nature is in recovery with abundant, diverse wildlife and natural processes creating wilder land and seascapes where people and nature thrive.

30% of land and sea is in recovery.

- People are better connected to nature in their lives and more are taking purposeful action for wildlife.

1 in 4 people are taking action for nature.

- We have the financial and human resources, systems and skills that we need to improve our impact for nature's recovery.

LWT will be bigger, better and more joined up.

Our Strategy

Defend wildlife and wild places

We will stand up for the environment and protect wild spaces, enhancing them for both people and wildlife. We will encourage biodiversity, and work with land owners and other organisations in partnership, to create a network of habitats across our region where people and wildlife can thrive.

Inspire people to take action for their local wildlife

We will inspire people to enjoy and protect the wildlife and wild spaces on their doorstep. We will help people learn how to live more sustainably, and demonstrate the benefits of nature to their health and wellbeing. We will engage people of all ages, from all communities to take action for wildlife and we will foster the environmental leaders of the future.

Base our work on sound evidence

We will use evidence from sound science and research to further ecological understanding and demonstrate the needs, benefits and outcomes of nature conservation. We will use this evidence to focus our efforts on the areas most in need of protecting and champion those species that need a helping hand.

Our Impact

- Our education team and project officers engage more than **20,000** children in wildlife-related activities.
- On average every **10 miles** you travel in the region means you will pass a Wildlife Trust project.
- More than **30,000** members support the Wildlife Trust in the region and 800,000 across the UK.
- More than **5,000** people a year take part in walks and other events on our reserves.
- We have over **1,200** dedicated volunteers supporting us on a regular basis, with their time, skills and experience.
- Our reserves cover more than **1,300** hectares across the region.
- We own or manage **42** nature reserves in the region.



Our Culture

We foster a creative environment where new ideas can flourish. Our team members take pride in personal responsibility, striving for excellence in everything they do. Success in our organisation comes from a commitment to outstanding results, alongside a dedication to building strong, meaningful relationships - both within our team and with our external partners.

We promote a culture where our staff, trustees and volunteers are Wild About Inclusion, where difference is celebrated, everyone can be themselves, feel respected and able to contribute to their full potential.

What does an LWT team member look like?

Integrity

Acting in the best interest of LWT and honouring our scientific foundations in every activity. Our approach is built on honesty, respect, and a commitment to the core objectives of the charity, as well as the wishes of our members and funders.

Teamwork

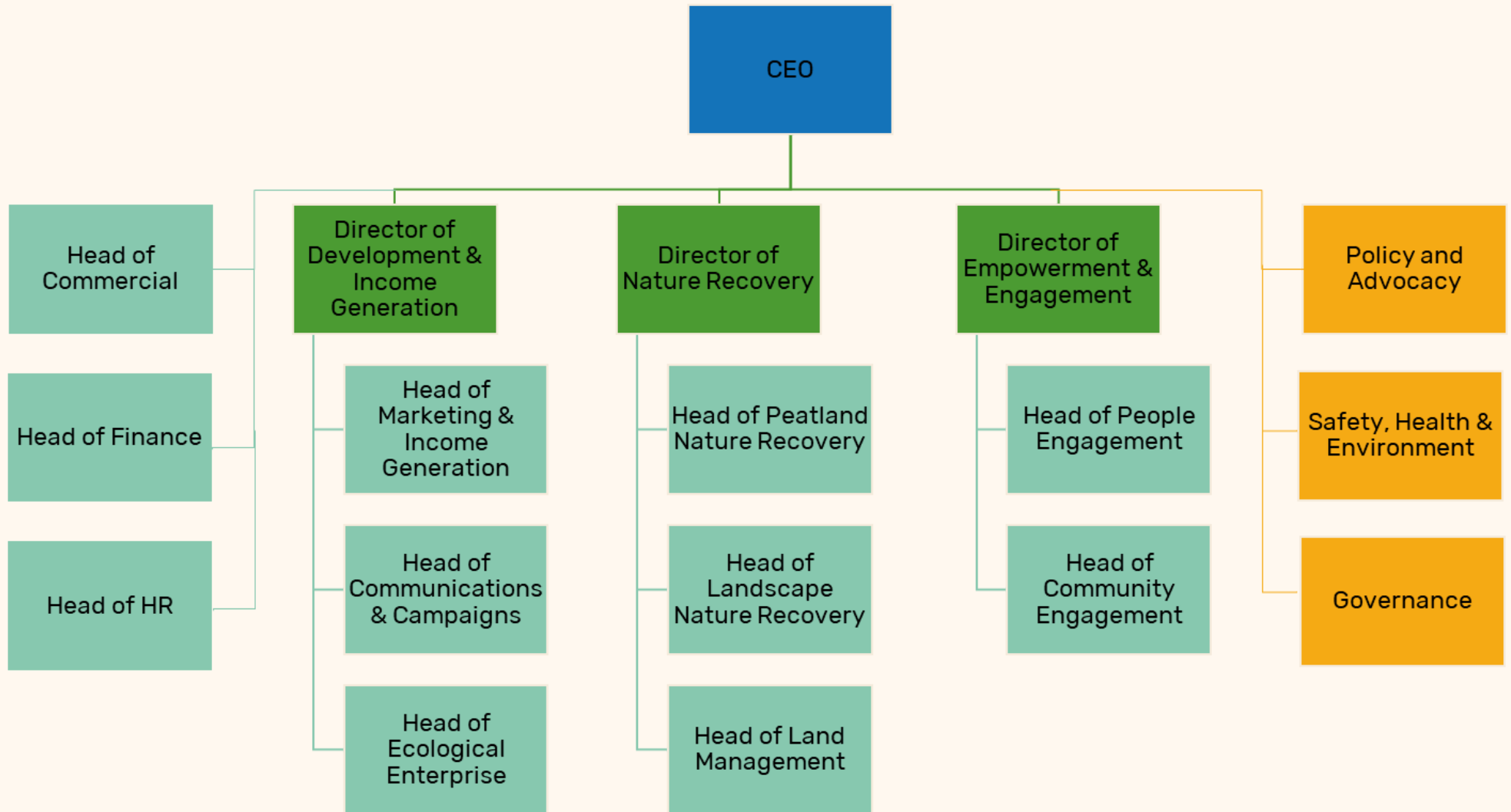
We foster a friendly, welcoming atmosphere where everyone is treated with respect and courtesy. We believe in the strength of our unity as one big team. Always ready to roll up our sleeves and help wherever it's most needed, regardless of the role.

Passion

Passion drives every LWT team member. Whether it's a love for wildlife, a desire to make a meaningful difference, or a commitment to inspire others, passion is at the heart of everything we do - and we have it in abundance!



Our Organisation



About the project

The Lancashire Peat Partnership (LPP), hosted by Lancashire Wildlife Trust, brings together a wide range of partner organisations across Lancashire to work together and maximise the benefits of peatland restoration. Key partners include United Utilities, Forest of Bowland National Landscapes, and National Trust.

This role will work as part of the LPP team, focussing on peatland restoration across the West Pennine Moors SSSI and the surrounding areas.

This role offers a valuable opportunity for a driven and practical individual to get hands on with peatland restoration and both desk-based and field surveys, assisting in delivery of United Utilities AMP8 peatland projects. This work also directly contributes to the work of the Great North Bog (GNB) and will lead to cross-collaboration between the nation's peat partnerships.

Lancashire Peat Partnership: Historically, Lancashire would have possessed huge swathes of peatland habitats such as blanket bogs, lowland raised bogs and fens. Much of this has been damaged and lost due to improper management and other damaging practices such as wildfires or extraction. As our most important habitat in the race to net zero, there is urgent need for collaborative work to protect and restore Lancashire's remaining peatlands. Peatland habitats can be found across most of our upland areas such as the West Pennine Moors and the Forest of Bowland National Landscape, and our lowland mosslands which are spread across Lancashire, Greater Manchester and North Merseyside. The LPP brings together key organisations across the region to collaboratively promote the importance of our peatlands, work together to maximise the benefits of restoration projects, secure funding, and to share knowledge and scientific findings.

The LPP sits within the wider Peatlands Programme in the Trust. This is a major workstream and the award-winning team has led years of campaigning, advocacy, and works to protect and restore the peat landscape in Lancashire, Greater Manchester and North Merseyside. LWT's Peatland Programme has over 20 years' experience in landscape scale, multi-partner, multi-site and multi-million-pound project delivery and programme management; delivering pioneering and nationally significant restoration from designated sites, former commercial peat extraction sites to agricultural land. In recent years the peat programme has been pioneering sustainable management of agricultural peat soils.

The Great North Bog: An ambitious, large-scale peatland restoration coalition consisting of six northern peat partnerships; Cumbria Peat Partnership, Lancashire Peat Partnership, Moors for the Future Peat Partnership, North Pennines National Landscape, Northumberland Peat Partnership, and Yorkshire Peat Partnership. The GNB is a landscape-scale approach to upland peat restoration and conservation across nearly 7,000km² of peatlands habitats in Northern England, which can store 400 million tonnes of CO₂e. The coalition aims to develop a working partnership to deliver a 10-year funding, restoration and conservation plan to make a significant contribution to the UK's climate and carbon sequestration targets.

Job Description

Post Title:

Lancashire Peat Partnership Assistant Project Officer x2

Responsible to:

Lancashire Peat Partnership Manager

Location:

The Barn, Berkeley Drive, Bamber Bridge, Preston, PR5 6BY
(Hybrid working available)

Hours of Work:

35 hours per week

Salary:

£24,083.95 per annum

Duration of post:

31st March 2030

Other:

All candidates must have the Right to Work in the UK.

PURPOSE OF POST

The LPP Assistant Project Officers (APOs) will support the LPP Development & Technical Officer and the LPP Project Officer to deliver landscape scale survey and restoration work across the blanket bogs and heathlands of Lancashire and Greater Manchester in line with United Utilities' AMP8 peatland restoration projects. This will involve supporting in desk-based and field surveys, monitoring of existing sites, as well as the design of restoration plans and overseeing contractors on restoration sites. There may also be a requirement to support the LPP Engagement Officer to oversee volunteer planting sessions.

The LPP Assistant Project Officers can expect to be out on site at least 3 days per week.

KEY ROLES AND RESPONSIBILITIES

- Work as part of the LPP team to support the delivery of blanket bog and heathland restoration; supporting the production and implementation of site restoration plans, carrying out detailed surveys to help identify and quantify restoration works required.
- Support the tendering process and help with overseeing the contractors on site during delivery work.
- Undertake essential biological and hydrological monitoring of sites.
- To ensure compliance with legal obligations including biodiversity and health and safety regulations. This will involve land tenure issues, undertaking risk assessments, supervising volunteers and contractors and monitoring work practices.
- Attend meetings with partners and report on progress when required.
- To work with the LPP Engagement Officer and the comms team to support and deliver education / engagement activities to raise awareness of peatlands.
- Flexibility and a willingness to work regular unsocial hours. Overtime is not paid but time off in lieu may be taken, where appropriate, as the post will involve some evening or weekend working.
- Frequent travel around the Trust area and occasionally beyond.
- The job holder is required to follow and comply with all policies and procedures of the Trust which includes the Trust's Health and Safety procedures in the workplace, ensuring personal safety and the safeguarding of the interests and safety of all staff, trainees, visitors, and others at the Trust.
- To work as part of a team alongside staff and volunteers as required.
- To uphold the working values and expectations of the Lancashire Wildlife Trust.
- To carry out other duties relevant to your post as reasonably required by your line manager.

Person Specification

EXPERIENCE

Essential

- At least one year's experience of practical land management and conservation experience working with a recognised conservation agency in a professional or voluntary capacity
- Ecological and hydrological surveys
- Working with a wide range of partners, individuals and organisations

Desirable

- Working on peatlands, blanket bogs and/or heathlands
- Writing reports for internal and external partners

KNOWLEDGE

Essential

- Knowledge of peatlands, blanket bogs and heathlands, their associated species and appropriate management, as well as their key benefits
- Ecological and hydrological survey methodology

Desirable

- A degree in a relevant environmental sector, or substantial practical experience in the sector would be an advantage but not essential
- The peatlands in Lancashire, their value, challenges and opportunities, restoration and management, and key stakeholders
- Good understanding of Health and Safety issues, including site and risk assessment

SKILLS

Essential

- Ecological and hydrological survey and biological recording, including identification of plants, birds, mammals and invertebrates (blanket bog and heathland specific species are an advantage)
- Communicating with a wide range of audiences, from topic experts to the general public
- Good IT skills (fully conversant with Microsoft Office) including data handling
- Good project development skills and ability to set, prioritise and meet targets on time
- Ability to work in partnership with other organisations, groups and individuals
- Familiar with GIS software
- Full current driving license and access to own vehicle

Desirable

- Outdoor First Aid

PERSONAL QUALITIES

Essential

- Commitment and enthusiasm to the Trust and its work
- Commitment to the Trusts policy on Equality, Diversity and Inclusion
- High levels of enthusiasm, self-motivation and self-discipline
- Well-organised and methodical
- Commitment and enthusiasm to the LPP and its work
- A positive and mature approach, with tact and diplomacy
- Flexible, responding to changes at short notice, and assist with several tasks at once
- Willingness to travel and work unsocial hours at times

General Terms & Conditions

Holidays:	28 days per annum (increasing with length of service), plus bank holidays, pro rata for part-time employees.
Pension:	The Trust contributes to the NEST Pension Scheme. Full details will be provided.
Hours of Work:	Full Time 35 hours per week. Normal working pattern will be 9.00am – 5.00pm. Overtime is not paid but time off in lieu may be taken, where appropriate, as the post may involve some evening or weekend work.
Duration of post:	This post is offered on a fixed-term basis. All new employees undertake a probationary period of 6 months; in which time they are expected to demonstrate their suitability for the post.
Closing Date:	Monday 27th April 2026
Interviews:	Thursday 7th May 2026

To apply for this position you are required to complete an Application Form which can be downloaded from our Website: www.lancswt.org.uk/jobs
Completed applications should be returned to: applications@lancswt.org.uk

Thank you for your interest in working for the Wildlife Trust for Lancashire, Manchester and North Merseyside. We look forward to receiving your application.

TERMS OF REFERENCE

As an inclusive employer, The Wildlife Trusts value diversity and we're committed to creating an inclusive culture where everyone is able to be themselves and to reach their full potential. We actively encourage applications from people of all backgrounds and cultures. We believe that a diverse workforce will help us create our vision of people close to nature, with land and seas rich in wildlife.

To understand how we are performing, we ask that you kindly complete a Diversity Monitoring Form in addition to your application.

Please be assured that your responses are kept confidential, separate from your candidate record, are not part of any application you make, and that the recruiting staff never see individual responses to the questionnaire.

Criteria Common to All Job Descriptions:

A Job Description sets out the purpose of the job, where it fits into the Trust's structure, the context within which the job holder functions and the principal accountabilities of job holders, or the main tasks they have to carry out. It is not a definitive work plan. This document is intended to provide guidance on the scope and function of the job.

Equal Opportunities Statement:

All employees are required to adhere to and promote the principles and operation of the Trust's policies on equalities, to ensure that services provided are relevant to ethnically diverse communities and other disadvantaged groups in the area.

Safety, Health and Environment Statement:

All employees are required to ensure that all duties and responsibilities are discharged in accordance with the Trust's Safety, Health and Environment (SHE) at Work Policy and associated SHE policies and guidelines. They should take reasonable care for their own Health and Safety and that of others who may be affected by what they do or do not do. Staff should correctly use work items provided by the Trust including personal protective equipment in accordance with training or insurance. All members of Trust staff are responsible for informing their line managers of any potential gaps in the current Trust Policy. All employees are responsible for ensuring that the SHE Policy is up to date and continuously reviewed and evaluated.

Performance Review:

All employees will participate in the Trust's Performance Review process. The process aims to ensure that performance standards/targets are jointly agreed between employees and line managers and are achieved within agreed time scales. Failure to maintain an appropriate standard indicated by management can result in Capability proceedings being taken.

Commensurate Statement:

At times, the Post holder will be required to undertake other duties and responsibilities of a similar level and nature in order to support workload peaks and resources and skill shortages, ensuring priorities are met. This will be sensitive to available resources and individual skills and will generally be within the same area.

Adherence to Staff Handbook, Policies and Procedures:

The Trust is a large, diverse charitable organisation and as such needs to ensure that all employees are aware of their obligations to and from the organisation. These are clearly defined in the Staff Intranet and in the policies and procedures adopted by Council as part of the Trust's governance. All Employees have an obligation to read and understand these policies, especially those that are pertinent to this role.